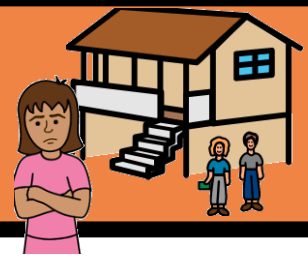
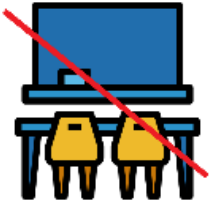


# Signs of school disengagement



This is how you can tell if your child is **disengaged** with school. They might do **some** or **all** of these things:



- They don't go to some classes



- They are late to school



- They miss days at school



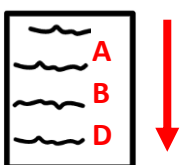
- They stop going to school or say they want to stop going to school



- They lose their temper or get angry at school



- They change the way they behave or act at school

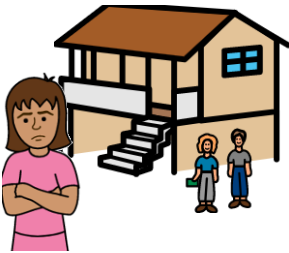


- Their grades or marks drop

Some other signs are harder to see. These include:



- They find it hard to concentrate



- They feel like they don't belong at the school



- They feel angry, frustrated, or annoyed



- They don't have friends at school



- Their relationships with other students bring hurt, distress, or sadness