



DRAFT

DRUG & ALCOHOL PREVENTION ALLIANCE (DAPA)

PREVENTION PLAN 2020-2021



INTRODUCTION



The East Gippsland Drug & Alcohol Prevention Alliance (DAPA) is a coalition of 20 local organisations including East Gippsland Shire Council, Vic Police, local health organisations, Government departments and a range of non government agencies.

DAPA has a primary prevention approach to preventing the harms caused to our community by alcohol and drugs with a particular focus on our young people. It is a Local Drug Action Team (LDAT) which receives some assistance from the Alcohol & Drug Foundation (ADF) of Australia.

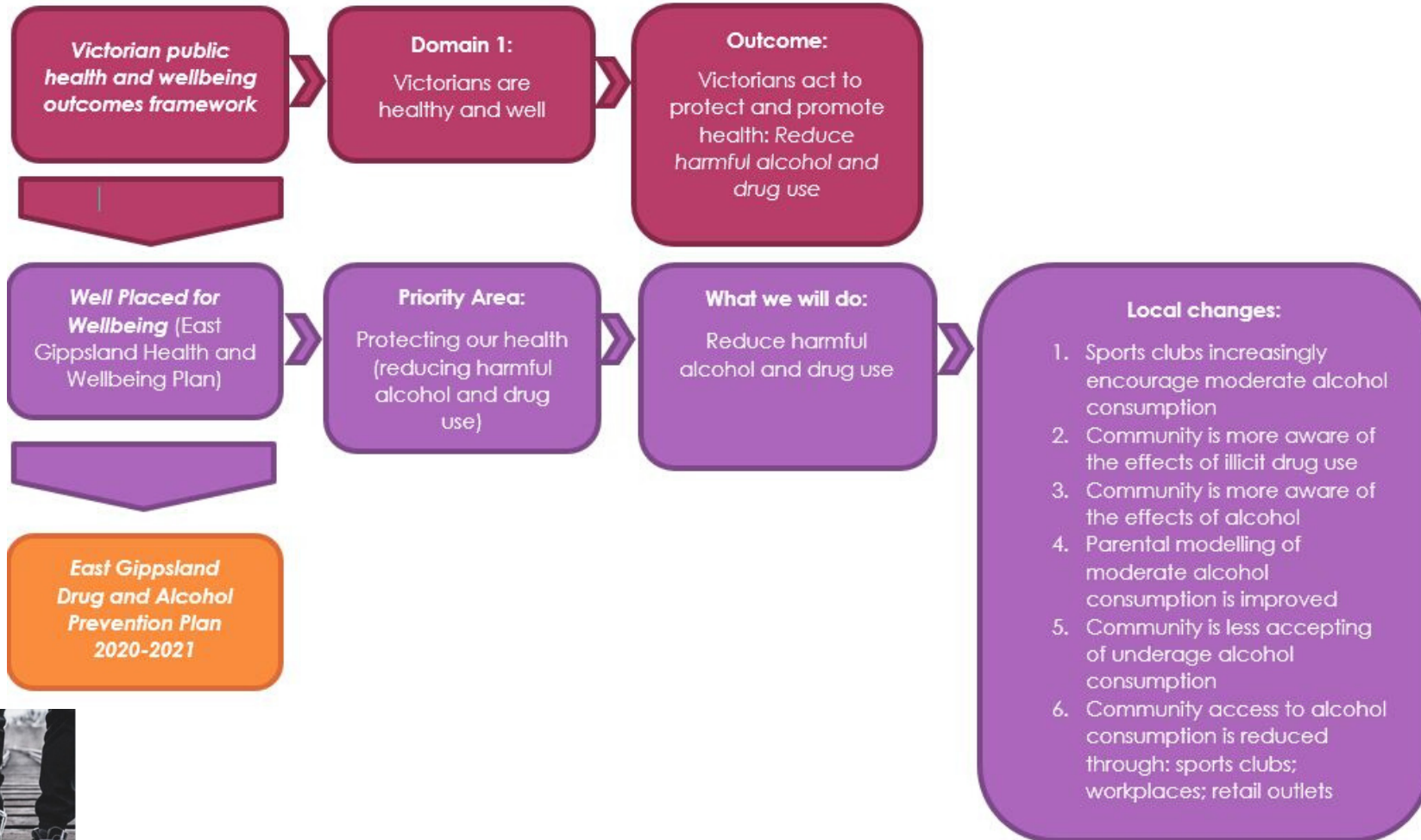
We have refined our prevention focus to first use of alcohol. Accordingly, we have implemented programs to increase protective factors, decrease risk factors and prevent first use of alcohol. Programs such as youth and teen mental health first aid to better equip, young people to identify and respond to their own mental health issues and strengthen the knowledge of parents and others who work with young people. These programs are designed to put downward pressure on the risk factor of depressive symptomatology.

In 2018, the East Gippsland Primary Care Partnership (EGPCP) and the East Gippsland Shire Council connected the work of DAPA to the East Gippsland Communities That Care (CTC) initiative, resulting in a single, coordinated network for the primary prevention of drug and alcohol use in East Gippsland. DAPA has since formally become the community board of the East Gippsland CTC initiative, has developed a set of shared measures against areas of change we seek and continues to build a community programs profile that address the risk and protective factors that we seek to change.

The prevention actions outlined in this plan will be implemented by the Drug & Alcohol Prevention Alliance and their partners.

For more information about DAPA or any of these initiatives, visit our website:
<https://www.eastgippslandpcp.com.au/prevention/drug-and-alcohol>

POLICY CONTEXT





1

Sporting clubs encourage moderate alcohol consumption



2

Community are aware of the effects of illicit drug use



3

Community are aware of the effects of alcohol

DAPA PREVENTION AREAS



4

Parental modelling of alcohol consumption is improved



5

Community are less accepting of underage drinking



6

Community access to alcohol consumption is reduced

Well Placed for Wellbeing priority area 3: Protecting our health (reducing harmful alcohol and drug use)

1 Sports clubs increasingly encourage moderate alcohol consumption



CTC Protective Risk Factors

- RF: Friends use of drugs
- RF: Community laws/norms favourable to substance use
- RF: Perceived availability of drugs
- PF: Community opportunities for prosocial involvement
- PF: Family opportunities for prosocial involvement
- PF: family rewards for prosocial involvement
- PF: Interaction with pro-social peers

Measure

- Number of clubs registered with Good Sports, levels 1-3
- Number of liquor licences requests applied for and approved to sporting clubs

Data Source

- Gipps sport
- Good Sports
- EGPCP
- Vic Pol

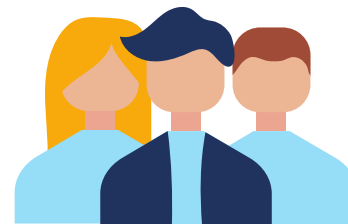
Data Set

- Total Good Sport registered clubs in East Gippsland:
 - L3- 16 clubs
 - L2- 7 clubs
 - L1- 4 clubs
 - Total- 27 EG clubs (Source ADF)

Potential Actions

- Good sports program <http://goodsports.com.au>
- Gippy Girls "This girl Can"
- Local sports clubs' events. Gift giving policies and bans on AoD
- Liquor licencing awareness sessions
- Case studies on clubs that have proceeded with low alcohol and not lost revenue

2 Community is more aware of the effects of illicit drug use



CTC Protective Risk Factors

- RF: Low Community attachment
- RF: Community laws/norms favourable to substance use
- RF: Perceived availability of drugs
- RF: Parental attitudes favourable to drug use
- RF: Friends use of drugs
- PF: School opportunities for prosocial behaviour
- PF: Community opportunities for prosocial behaviour
- PF: Belief in the moral order

Measure

- Parental attitudes favourable to substance use



Data Source

- CTC data Youth survey EGSC
- EGPCP
- Headspace
- ACSO



Data Set

- "Parental attitudes to favourable substance use" in East Gippsland as compared to the national average 2018.
 - 36% EG vs 20% Nat (Yr. 8)
 - 58% EG vs 37.5% Nat (Yr10)(Source CTC youth survey 2018)



Potential Actions

- Incredible Years <http://www.incredibleyears.com>
- ACSO
- Family Support Groups Bairnsdale and Orbost
- Turning into Teens



Well Placed for Wellbeing priority area 3: Protecting our health (reducing harmful alcohol and drug use)

3 Community is more aware of the effects of alcohol



CTC Protective Risk Factors

- RF: Low Community attachment
- RF: Community laws/norms favourable to substance use
- RF: Perceived availability of drugs
- RF: Parental attitudes favourable to drug use
- RF: Friends use of drugs
- PF: School opportunities for prosocial behaviour
- PF: Community opportunities for prosocial behaviour
- PF: Belief in the moral order

Measure

- Community laws and norms favourable to substance use



Data Source

- CTC data youth survey EGSC
- EGPCP
- Headspace
- ACSO
- Vic Pol and TAC data on community attitudes
- Reduction in teen road toll



Data Set

- "Community laws/norms favourable to substance use" in East Gippsland as compared to the national average 2018.
 - 46.7% EG vs 34.5% Nat (Yr8)
 - 70.6% EG vs 57.1% Nat (Yr10)(Source CTC youth survey 2018)



Potential Actions

- Future Learn
<https://www.futurelearn.com/courses/caring-psychosis-schizophrenia/5/welcome>
- Smart Generation Supply Monitoring
<http://psych.hosted-sites.deakin.edu.au/smart-generation>
- Climate
- Triple positive parenting program
<https://www.tripleparenting.net.au/au-uk/en/triple-p>



Well Placed for Wellbeing priority area 3: Protecting our health (reducing harmful alcohol and drug use)

4 Parental modelling of moderate alcohol consumption is improved



CTC Protective Risk Factors

- RF: parental attitudes favourable to drug use
- RF: Perceived risks of drug use
- PF: family attachment
- PF: Family opportunities for prosocial involvement
- PF: Family rewards for prosocial involvement

Measure

- Less coverage of normalised drinking behaviour in the media (local, social, mainstream)
- Seeing less adults drinking with children in public settings (pubs, clubs, sports venues)
- Number of schools that have an alcohol policy for public/school community events



Data Source

- EGPCP
- Save the Children
- DET



Data Set

- DET alcohol and drug use policies that apply to all public schools.
 - Alcohol policy: <https://www.education.vic.gov.au/school/principals/spag/safety/Pages/alcohol.aspx>
 - Drug policy: <https://www.education.vic.gov.au/school/principals/spag/safety/Pages/druguse.aspx> (Source DET 2019)



Potential Actions

- Turning into kids <http://www.tuningintokids.org.au>
- Triple p positive parenting program <https://www.triplepparenting.net.au/au-uken/triple-p>
- Incredible years <http://www.incredibleyears.com>
- EGSC to build in restrictions on serving alcohol where schools/families in attendance
- Encourage local schools to build in restrictions for alcohol use at presentation nights etc
- Achievement Program

5 Community are less accepting of underage drinking



CTC Protective Risk Factors

- RF: Perceived risks of drug use
- RF: Community laws/norms favourable to substance use
- RF: Poor family management
- RF: Parental attitudes favourable to drug use
- RF: Low community attachment
- PF: Community opportunities for prosocial involvement
- PF: School opportunities for prosocial involvement
- PF: Family opportunities for prosocial involvement

Measure

- Number of community events that include alcohol consumption
- Number of breaches in liquor licence compliance i.e. service of intoxicated persons, service to underage patrons

Data Source

- Vic Police
- VCGLR
- DET
- EGSC

Data Set

- Victorian Commission for Gambling and Liquor Regulation
https://liquor.vcglr.vic.gov.au/alarm_internet/alarm_internet.asp?wci=start_alarm_internet

Potential Actions

- Teen Mental Health First Aid
<https://mhfa.com.au>
- Liquor licencing awareness events Vic Pol

6 Community access to alcohol consumption is reduced through: sports clubs; workplaces; retail outlets



CTC Protective Risk Factors

- RF: Community laws/norms favourable to drug use
- RF: Favourable attitudes to drug use
- RF: Friends use of drugs
- PF: Community opportunities for prosocial involvement
- PF: School opportunities for prosocial involvement
- PF: Family opportunities for prosocial involvement

Measure

- Number of current liquor licences
- Number of licences for one off events
- Number of liquor licence variations
- Liquor licencing hours



Data Source

- Vic Police
- Gippsport
- VCGLR
- EGPCP
- EGSC



Data Set

- L/Licences Major regional towns:
 - Bairnsdale = 60
 - Lakes Entrance = 45
 - Paynesville = 21
 - Orbost = 14
 - Metung/ Nungurner = 13
 - Total L/Licences for EG = 255 (Source VCGLR)



Potential Actions

- Good sports program <http://goodsports.com.au>
- Victorian Commission for Gambling and Liquor Regulation https://liquor.vcglr.vic.gov.au/alarm_internet/alarm_internet.asp?wci=start_alarm_internet
- Local sports clubs events. Gift giving policies and bans on AoD
- EGSC policies on alcohol sales at public events that include children



GET INVOLVED



Is your organisation working on these drug and alcohol priority areas?

Do you want to connect with others working on similar initiatives and make collaborative change in East Gippsland?

The East Gippsland PCP would love to hear from you



(03) 5153 0149



connect@egpcp.org



www.eastgippslandpcp.com.au/prevention/drug-and-alcohol