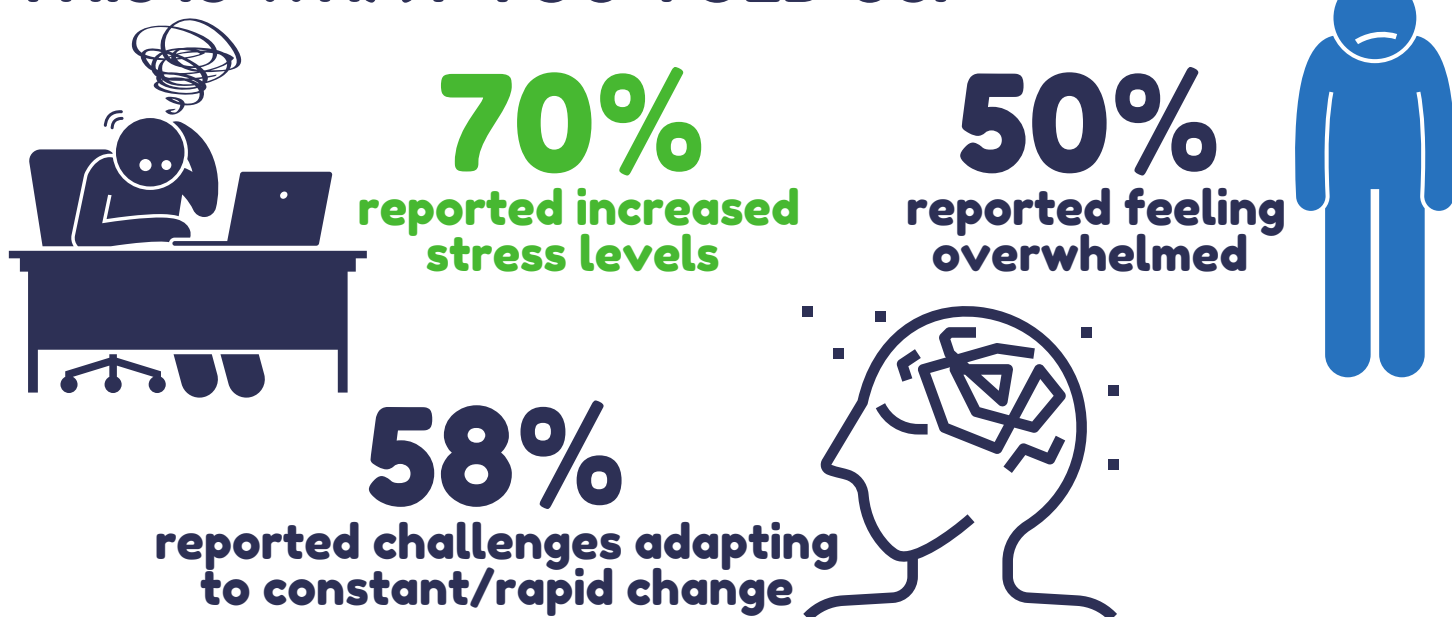


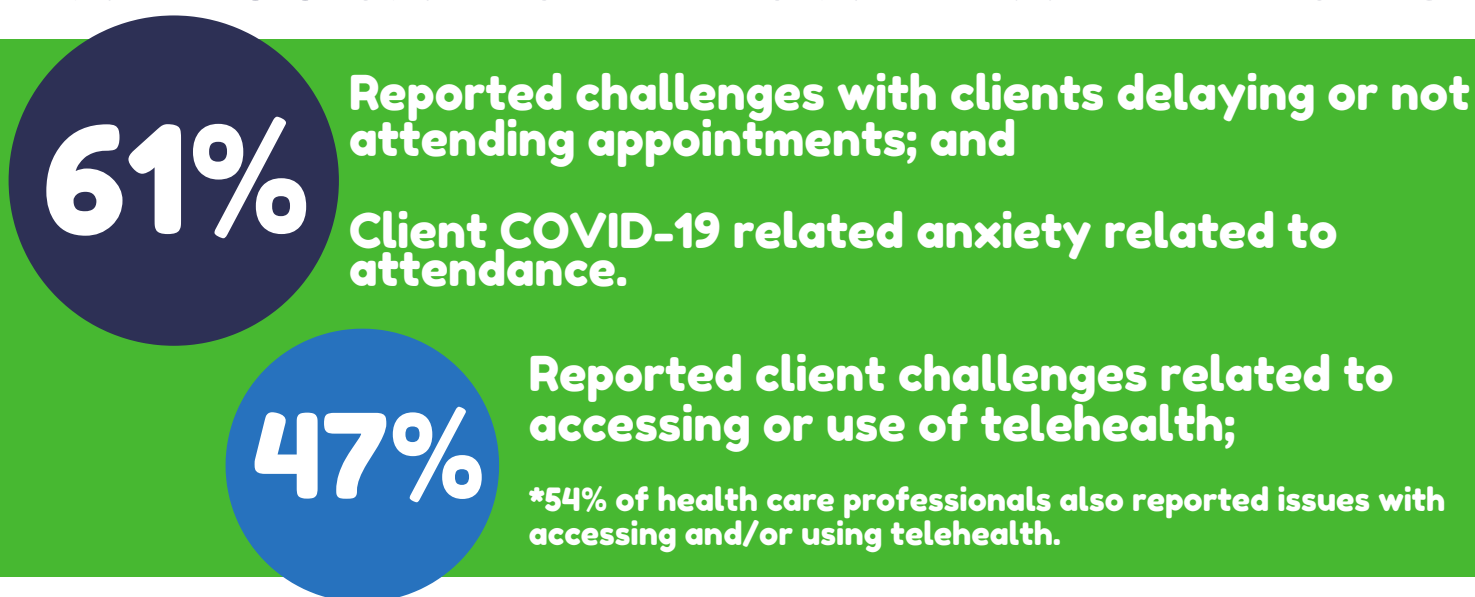
# SUPPORTING CLIENTS WITH DIABETES IN THE COVID-19 ENVIRONMENT

We asked local health care professionals 5 quick questions about how the pandemic is effecting their practice. Thank you for your responses.

## THIS IS WHAT YOU TOLD US:



## WHAT YOU SAID CLIENTS ARE EXPERIENCING:



We know that everyone working in health is part of the client's health care team and may need extra support during the COVID-19 pandemic.

## WHAT YOU WANT CLIENTS TO KNOW:



## WHAT YOU WANT THE COMMUNITY TO KNOW:

