

# Hume Whittlesea Primary Care Partnership

2019 YEAR IN REVIEW

#Prevention

Community investment program



@HWPCP  
45 PARTNERS  
10 NETWORKS  
9 COMMITTEES

40 COMMUNITY MEMBERS  
343 TWITTER FOLLOWERS  
730 NEWSLETTER RECIPIENTS

**Hume City Council:**  
HumeXplorer -  
Creating active  
outdoor play  
activities



## #PartnershipsDeliver

- Whittlesea Community Futures.
- Northern Health Population Health and Primary Care Committee.
- Northern Health Aboriginal Advisory Committee.
- DHHS North Metro Prevention Partnership.
- DPV Health and Northern Health LGBTIQ+ and Pride in the North March Network and committees.
- Whittlesea Community Connections.
- Whittlesea Reconciliation Group.
- North Metro Community Care Alliance.
- Victorian Primary Care Partnership Executive Leadership Group

## #EqualcareforALL

- Universal electronic perinatal screening tool platform for pregnant women attending Northern Health, Hume City Council and DPV Health.
- eHealth and Integrated System Reference Group.
- 2009-19 Whittlesea Anniversary Bushfire community and mental health Support Project.
- EMPHN North East Mental Health Service Coordination Alliance.
- Whittlesea Interagency Taskforce on Gambling harm.
- Outer Northern Refugee Health Network Quarterly Refugee and Asylum Seeker Data Reports (Hume and Whittlesea LGA's).
- HWPCP North Metro Sector Development Team - DHHS and DoHA CHSP, HACC - PYP Wellness and Reablement and Diversity Support Programs.

## @SVGrowingNorth

Shared Vision for the Growing North Project:

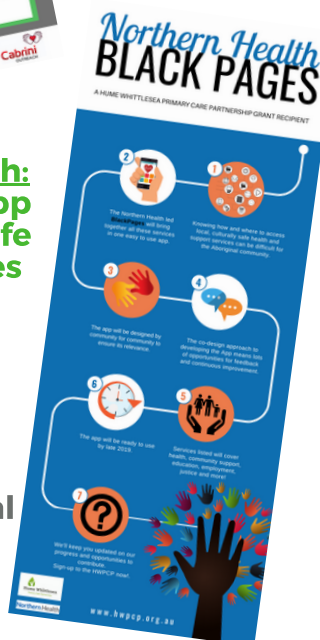
- Succession Planning for Diabetes Diversion Partnership Project.
- Whole of catchment Diabetic care referral pathways and eligibility criteria planning.
- Hume/Mitchell Councils, Northern Health and Nexus Pediatric Early Intervention screening, referral protocols and shared service arrangements.
- Whole of catchment scaling of childhood obesity prevention project.
- Best practice evidence guides and data reports.

## #BestPractice

- iCOPE - 4 sites with over 1000 pregnant women screened for family violence.
- Diabetes Diversion project evaluation.
- Whole of region Loneliness in workplace survey.
- HWPCP VCAT Submission and hearings on Electronic Gaming harm.
- Master's Public Health Student Placements.



**Whittlesea Community Connections:**  
Asylum Seeker  
Pharmacy Waiver  
Program



**Northern Health:**  
Black Pages App  
of culturally safe  
Health Services  
in the North

**Northern Health:**  
Cultural Safety  
Employment  
Strategy Aboriginal  
and Torres Strait  
Islander peoples

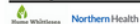


**Workforce Cultural Competency =**  
[ Cultural (Aware)ness + Cultural (Sens)itivity ]



Culturally safe workplace  
Partnerships Respect Quality Community Advocacy

Cultural Safety Employment Strategy -  
Aboriginal and Torres Strait Islander peoples



www.hwpcp.org.au





**BUILDING CULTURAL SAFETY**



**LAUNCHING IDEAS & NETWORKS**



**RAISING VOICES**



**TAKING ACTION**



**LEADING THE WAY**

[www.hwpcp.org.au](http://www.hwpcp.org.au)  
[@HWPCP](https://twitter.com/HWPCP)